

allard^{INT}



INSTRUCTIONS

USER

COMBO
a ToeOFF-Family product

www.allardint.com

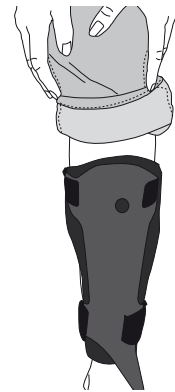
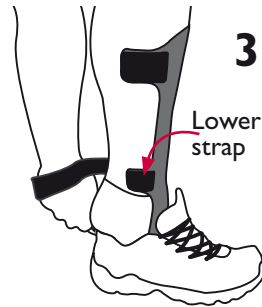
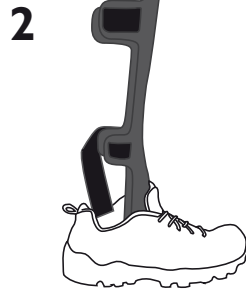
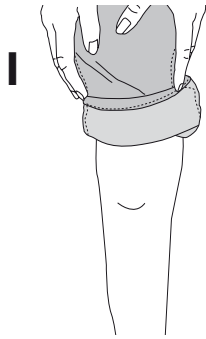
Patent no.:

ToeOFF, ToeOFF Short, ToeOFF Fantasy, ToeOFF NFR, BlueRocker, BlueRocker NFR, KiddieGAIT, KiddieGAIT NFRAU736950, BE1005297, BE1114626, DK1005297, DK1114626, FI1005297, FI1114626, FR1005297, FR1114626, IE1005297, IE1114626, IT1005297, IT1114626, CA2279225, CNZL97181689.1, NL1005297, NL1114626, NO313656, PL194247, CH1005297, CH1114626, ES1005297, ES1114626, GB1005297, GB1114626, SE1005297, SE1114626, DE69709184.8-08 DE69732541.5-08, US5897515, ATE210417, ATE289187 Ypsilon, Ypsilon NFR GE60208889.5-08, GB1379201, IT1379201, US6887213

READ THIS INSTRUCTION CAREFULLY BEFORE USE

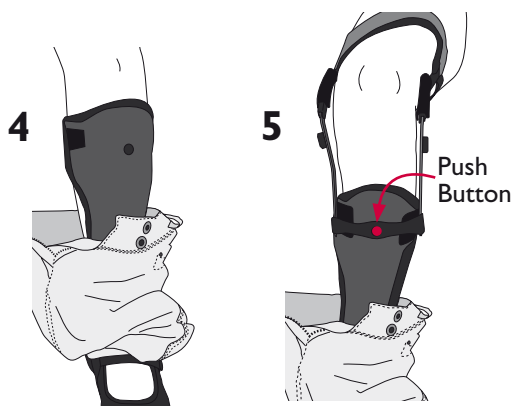
The brace that you have received is actually two braces in one. The lower part, the ToeOFF® or BlueRocker™ (AFO), and the upper part, the Combo (Thigh cuff with extension control uprights). They should preferably be used together to provide increased ankle stability and/or dynamic walking assist, and help prevent hyperextension of your knee. The lower part (AFO) can also be used as a separate item when desired.

The Combo part has been shaped and adjusted to fit your leg. You should not make any adjustment to the Combo on your own. If you feel any discomfort or experience any skin irritation, you should immediately remove the brace and contact your orthotist.

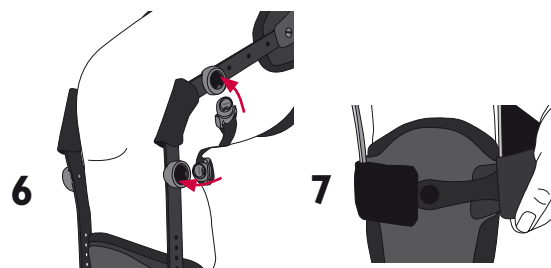
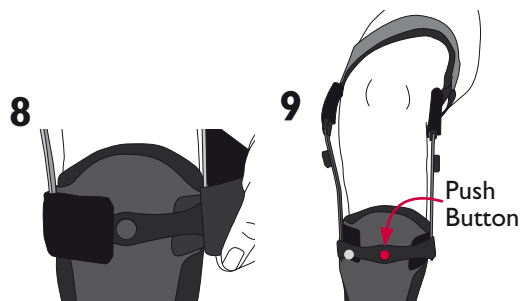


PUTTING ON YOUR BRACE

1. Pull trousers or slacks up above your knee.
2. Slide the ToeOFF/BlueRocker (the lower part) into your shoe.
3. Slide your foot into the shoe, attach and wrap the lower Velcro strap around your calf and attach to the Velcro on the opposite side.



4. Slide your trousers/slacks down below your knee.
5. Position the thigh cuff on your thigh and connect the push button.



6. Attach the buckles for the Hyperextension Support Pad (soft pad that goes behind your knee).
7. Wrap and secure the circular strap around the part where the two braces are connected.

REMOVING YOUR BRACE

8. Release the circular strap.
9. Press in the push button and pull the Combo away from the ToeOFF/BlueRocker.

CLEANING

Both the Combo and the ToeOFF/BlueRocker are padded with a soft interface. This should be removed and washed frequently to avoid skin irritation. Machine wash in lukewarm water (40°C, 104°F) with mild soap, dry flat. Do NOT dry clean, bleach, tumble dry, or iron.

Do not open the C-Shaped Velcro tabs on the Hyperextension Support Padding. Wash the padding with the buckles still in place. Use a washing bag.

SKIN MONITORING

Check the condition of your leg and foot daily. Consult your physician or orthotist immediately in the case of skin irritation or discoloration.

Also read the User Instructions for the ToeOFF/BlueRocker.

 Camp Scandinavia AB, Karbingatan 38
SE-254 67 Helsingborg, Sweden
Phone +46 42 25 27 01



allard|^I_T

www.allardint.com

Tel +46 42 25 27 00
Fax +46 42 25 27 25

ALLARD INTERNATIONAL
c/o Camp Scandinavia AB
Karbingatan 38
SE-254 67 Helsingborg SWEDEN
info@allardint.com