

Ypsilon™

Mild Involvement: Isolated to mild to moderate footdrop.



ToeOFF®

Moderate Involvement: Mild to severe footdrop accompanied with mild to moderate ankle instability.



BlueRocker™

Multiple Involvement: Footdrop, severe ankle instability, and/or proximal neuromuscular weakness/deficits.



For more involved cases of footdrop



NOT FOR RESALE

To further assist you in selecting the product which will work best for your patient, special evaluation units, clearly labeled "Not For Resale" are offered for each of the three models.

INDICATIONS - BlueRocker™

- Footdrop from neurological disorders such as stroke, MS, post-polio
- Footdrop from Myelomeningocele, Cerebral Palsy, Muscular dystrophy
- Bilateral deficit such as CMT, Neuropathy
- Severe spasticity
- Partial foot amputation

CONTRAINDICATIONS - BlueRocker™

- Severe edema
- Diabetes with ulcers
- Sensory nerve injury

For indications and contraindications regarding Ypsilon™ and ToeOFF® – please order separate information or visit www.campscandinavia.se



www.campscandinavia.se

SVERIGE

Tel 042-25 27 01
Fax 042-25 27 25

mail.sweden@campscandinavia.se

DANMARK

43 96 66 99
43 43 22 66

mail.denmark@camp.dk

FINLAND

09-350 76 30
09-350 76 338

mail.finland@camp.fi

NORGE

23 23 31 20
23 23 31 21

mail.norway@camp.no



BlueRocker™

Increased stability for improved balance in more involved cases

BlueRocker™ for more involved cases of footdrop

BlueRocker™ is the third and latest product in our range of dynamic ankle foot orthoses. The extra stability will improve both balance and posture and give the wearer greater security, especially individuals with weak quadricep muscles. BlueRocker was developed primarily for individuals with more involved pathology in addition to footdrop.

BlueRocker™ is recommended for patients with:

- Weakness or impairment in multiple leg muscle groups
- Impaired balance
- Reduced knee- and hip control
- Severe spasticity
- Partial foot amputation
- Limb proprioception deficit

ToeOFF®

CAMP's original dynamic response floor reaction ankle foot orthosis

ToeOFF® AFO introduced in 1997 is now recognized as a quantum leap in AFO technology. Today, tens of thousands of individuals with gait impairment due to footdrop now enjoy a higher quality of life thanks to the stability and dynamic assist provided by this orthosis.

ToeOFF® is recommended for patients with:

- Impaired knee control
- Limb proprioception deficit.
- Mild to moderate spasticity
- Partial foot amputations



YPSILON™

for less involved cases of footdrop

Ypsilon™ has a more open and flexible construction. It continues to offer dynamic "toe-off" assist and floor reaction control, while allowing natural ankle movements for the stable ankle. The "Y" design offers clearance for the tibia crest for increased patient comfort.

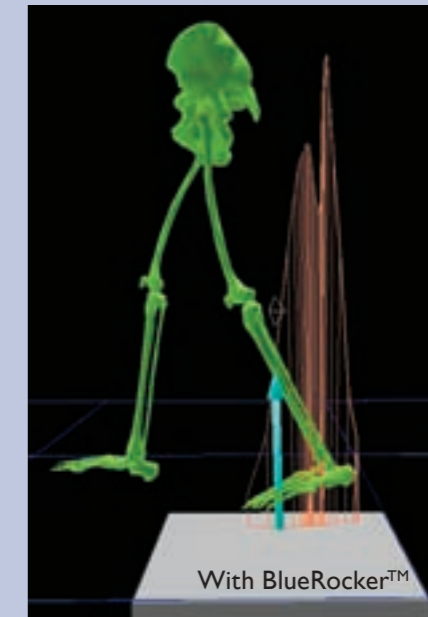
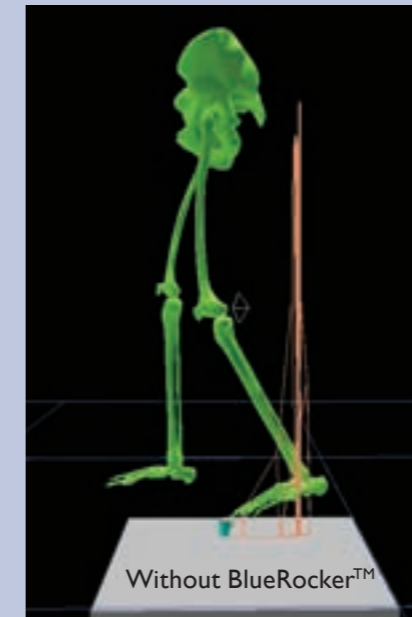
Ypsilon is recommended for patients with:

- Weak dorsi-flexors
- Peroneal nerve injury
- No or mild spasticity
- Stable ankle
- Sensory Nerve Injury



Gait analysis with and without BlueRocker™

The primary goal of the BlueRocker™ is to utilize the dynamics of the orthosis to normalize gait as much as possible throughout the entire gait cycle. The photo on the left shows how without an orthosis, the ankle is unstable and the initial contact is going to involve the full plantar surface of the foot. The photo on the right demonstrates how when wearing the BlueRocker™, in addition to lifting the foot during swing, it positions the foot so that the heel instead of full-foot is the initial contact. BlueRocker™ also provides good medial-lateral stability at mid-stance, and dynamic propulsion at pre-swing. Wearing BlueRocker™ bilaterally, the gait pattern is clearly improved with a good pre-swing and significant balance and trunk posture improvement.



Ground Reaction Forces

The narrow spike in forces without the BlueRocker™ indicates a static "peg leg" type of gait pattern. With the BlueRocker, the forces are distributed in a wider gait rocker band, indicating a more dynamic and fluid gait pattern. With BlueRocker™ bilaterally the gait pattern is clearly improved with a good pre-swing and improved balance as well as posture.

	left w.BR	right w. BR	normal	left w/o BR	right w/o BR
Gait speed (m/s)	0.86	0.88	1.43	0.54	0.58
Step frequency (step/min)	98.8	99.0	91.6	84.1	85.5
Cycle length(m)	1.04	1.06	1.44	0.75	0.79
Step length (m)	0.52	0.52	0.72	0.36	0.40
Support of other leg*	65.9	65.8	60.1	66.4	64.8
Single support*	34.2	34.6	39.6	34.6	35.0

(* = i % of gait cycle)